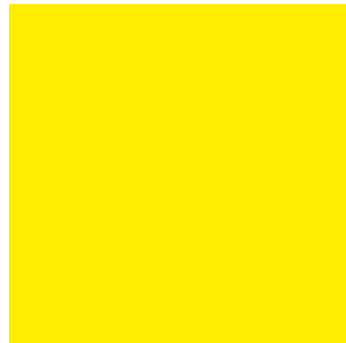


Your Specialists in Chromatography



## Maxi-Clean™ Solid Phase Extraction



# Maxi-Clean™ - Solid Phase Extraction Cartridges

**SepaChrom** offer the well known brand Maxi-Clean™ which was introduced decades ago by Alltech Associates and recently acquired by S\*Pure Ltd. High-Quality of Maxi-Clean™ Cartridges is today recognized among the users of chromatographic techniques.

Maxi-Clean™ Cartridges have the same bed dimensions as 4mL SPE Columns for easy method cross-over. Process a single cartridge by syringe or multiple cartridges by vacuum. Maxi-Clean™ cartridges allow you to stack different cartridges for multi-step extractions. Use top and bottom caps for easy transport or field samples. Here's 10 different ways these cartridges can be used to address difficult extractions and SPE protocols.

Maxi-Clean™ are available with Reverse-Phase, Normal-Phase, Ion-Chromatography and Ion-Exchange sorbents. **SepaChrom** commit to deliver these items from stock at a competitive price in the market.

## 10 Ways to Use Maxi-Clean™ SPE Cartridges !

### 1. Bulk Preconditioning on a Vacuum

Save time and solvents by preconditioning Maxi-Clean™ Cartridges on a vacuum manifold. Double stack for even faster preparation.



### 6. Easy to Transport and Store

Use top and bottom caps to transport or store a Maxi-Clean™ Cartridge containing your analyte, without risking contamination or dehydration.



### 2. Direct Substitution into Method Using Standard 4mL Columns

Maxi-Clean™ Cartridges have the same bed dimensions as traditional 3-4mL SPE Columns, for easy substitution into established protocols.



### 7. Process Individually or in Parallel

Do you only have a few samples to process? Process them with a syringe, instead of setting up a vacuum manifold. Do you have a lot of samples to process? Add an empty reservoir to process them simultaneously on your manifold.



### 3. Stack 2 Cartridges in series for Complex Extraction

Maxi-Clean™ Cartridges can be stacked to combine 2 phases into 1 extraction step for complex analyses. You can even elute each phase individually, if needed.



### 8. Use In-Line

The Maxi-Clean™ cartridge's luer connections allow you to use them in-line, to remove contaminants or act as a "guard" cartridge in low-pressure applications.



### 4. Elute Anywhere

Use a syringe to elute your analyte anywhere: directly into an injection valve, or into other receiver vessels. You can even attach a needle and elute directly through a septa or 96-well sealing mat.



### 9. Custom-fit to Your Sample Size

By changing reservoir sizes, you can customize a Maxi-Clean™ Cartridge to fit your sample size without changing the bed dimensions.



### 5. Combine SPE with Filtration by Adding a Filter Tube or Syringe Filter in Series

The Maxi-Clean™ Cartridge's luer connections allow you to add a syringe filter or a fritted SPE tube to remove particulates before your sample enters the SPE bed.



### 10. Choose from a Wide Range of Chemistries

The Maxi-Clean™ line is offered in many of the same media as the Extract-Clean™ or GracePure™ lines, with over 20 chemistries available.



## Reversed-Phase SPE Cartridges

- Same bed dimension as 4mL SPE Columns for easy method transfer
- Process a single cartridge by syringe or multiple cartridges by vacuum
- Use top and bottom caps for easy transportation in field and/or laboratories



Maxi-Clean™ Reversed-Phase (Non-Polar) Sorbent Specification							
Packing	Base	% Carbon	End-Capped	Average Particle Size	Pore Size	Feature	Benefits
Standard C18	Silica	6.0%	Yes	50µ	60Å	Low Carbon Load C18	General Purpose Phase
Prevail™ C18	Silica	11.0%	Yes	50µ	60Å	100% Water Weattable	Hydrophilic/hydrophobic retention. Phase remains active even when completely dry. Can skip preconditioning step.
High-Capacity C18	Silica	17.0%	Yes	50µ	60Å	High Carbon Load C18	Maximum Capacity Phase
Large Pore C18	Silica	14.0%	Yes	50µ	150Å	Larger Pore Size	Ideal for Large Molecules >1500MW
Octyl (C8)	Silica	4.5%	Yes	50µ	60Å	Less Hydrophobic than C18	Less Retention of highly hydrophobic compounds. Use when C8 is too retentive

Maxi-Clean™ - Reversed-Phase Cartridges				
Packing	Bed Weight	Qty	Old Alltech #	Part.No
Standard C18	300mg	50	20926	LD0055
	300mg	100	20928	LD0056
	600mg	50	20934	LD0058
	600mg	100	20936	LD0059
	900mg	50	20942	LD0061
	900mg	100	20944	LD0062
Prevail™ C18	300mg	50	605926	LD0179
	500mg	50	605929	LD0180
	900mg	50	605942	LD0181
High-Capacity C18	300mg	50	20945	LD0063
Large Pore C18	300mg	100	22012	LD0124
	600mg	100	22017	LD0125
	900mg	100	220215	LD0126
Octyl (C8)	300mg	50	20950	LD0065
	600mg	50	20958	LD0068
	900mg	50	20966	LD0071

**A Wide Range of Syringe Filters and Membranes are Available !**

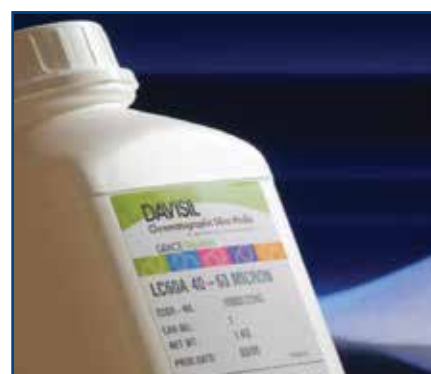


**Ask for the Bulletin SPE005**

## Bulk SPE Packing

Are you looking for High-Quality Bulk Packing for Your SPE Columns?  
Contact us for a quote !

Bulk SPE Packing Available				
Packing	Porosity	Average Particle Size	Qty	Part.No
Silica (SI)	60Å	50µ	250g	FA0056
Standard C18	60Å	50µ	250g	FA0042
Cyano	60Å	50µ	250g	FA0051
Diol	60Å	50µ	250g	FA0053
Aminopropyl	60Å	50µ	250g	FA0055



## Normal-Phase SPE Cartridges

- Same bed dimension as 4mL SPE Columns for easy method transfer
- Process a single cartridge by syringe or multiple cartridges by vacuum
- Use top and bottom caps for easy transportation in field and/or laboratories



Maxi-Clean™ Normal-Phase (Polar) Sorbent Specification							
Packing	Base	% Carbon	End-Capped	Average Particle Size	Pore Size	Feature	Benefits
Silica (SI)	Silica	-	-	50µ	60Å	Highly Polar Surface	Most Common Polar Phase
Aminopropyl (NH <sub>2</sub> )	Silica	5.0%	No	50µ	60Å	Polar Phase with Slight Anion Exchange Properties	Ideal for Carbohydrate or generally with analytes containing Hydroxyl functional groups
Florisil® (FL)	Magnesium Silicate	-	-	75-150µ	60Å	Highly Polar Surface	Referenced in many EPA methods. Ideally suited for Pesticides and Metals
Alumina Neutral (AL-N)	Aluminium Oxide	-	-	130µ	100Å	Alumina Washed with Neutral Surface	Interacts with Highly Aromatic Compounds and Neutral Hydroxyls

Maxi-Clean™ - Normal-Phase Cartridges				
Packing	Bed Weight	Qty	Old Alltech #	Part.No
Silica (SI)	300mg	50	20974	LD0073
	300mg	100	20976	LD0075
	600mg	50	20982	LD0077
	600mg	100	20984	LD0079
	900mg	50	20990	LD0081
	900mg	100	20992	LD0082
Aminopropyl (NH <sub>2</sub> )	300mg	50	210044	LD0087
	300mg	100	210046	LD0088
	900mg	100	210047	LD0089
Florisil® (FL)	300mg	50	210054	LD0090
	900mg	50	210057	LD0091
	900mg	100	210061	LD0092
Alumina Neutral (AL-N)	300mg	25	210095	LD0094
	1800mg	25	210098	LD0095

### Technical Info

#### What is a Maxi-Clean™ Cartridge ?

A Maxi-Clean™ cartridge is an alternative format for SPE application. It uses the same high-quality packing material as the Extract-Clean™ and GracePure™ but with a polypropylene housing with both a female luer inlet and a male luer outlet tip. This allows use of positive pressure from a syringe or negative pressure from a vacuum manifold. 20µ polyethylene frits are placed at each end of the sorbent bed. The packing material is packed and compressed to improve or optimize flow characteristics.

Other SPE Product Line available from [SepaChrom](#) :

## Extract-Clean™



## GracePure™

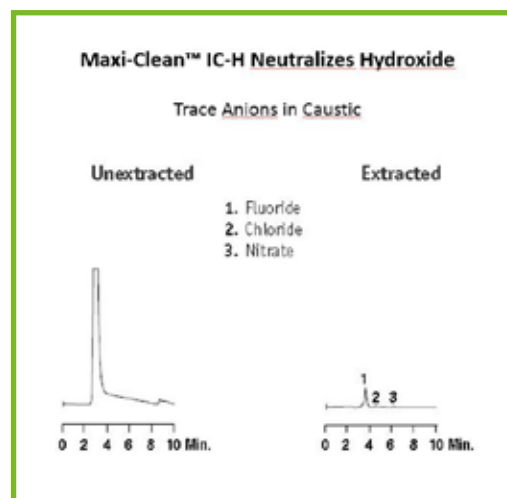


## Ion Chromatography SPE Cartridges

- Eliminate Matrix Interferences before Ion Analysis
- 7 Chemistries to Solve a Variety of Specific Problems

Maxi-Clean™ Ion Chromatography Sorbent Specification							
Packing	Base	Counter Ion	Average Particle Size	Molecular Exclusion Limit	Exchange Capacity	Retains	Benefits
IC-OH	Styrene/DVB	Hydroxide	50µ	1000 Daltons	1.0 meq/mL	Anions	Exchanges Anions for Hydroxide. May be used to remove or concentrate Anions from sample and to increase pH of Acidic samples. Remove Cations that form insoluble hydroxide salts
IC-H	Styrene/DVB	Hydro-nium	50µ	1000 Daltons	2.0 meq/mL	Cations	Exchanges Cations for H <sup>+</sup> . May be used to remove or concentrate Cations from sample and to reduce pH of Basic samples.
IC-Ag	Styrene/DVB	Silver	50µ	1000 Daltons	2.0 meq/mL	Chloride Iodide Bromide	Removes excess Halides through formation of Ag-Halide salts
IC-Ba	Styrene/DVB	Barium	50µ	1000 Daltons	2.0 meq/mL	Sulfate	Removes excess Sulfate through formation of BaSO <sub>4</sub> .
IC-Na	Styrene/DVB	Sodium	50µ	1000 Daltons	2.0 meq/mL	Cations	Exchanges Cations for Na <sup>+</sup> . May be used to remove or retain Cations from sample without changing the pH of the sample
IC-Chelate	Styrene/DVB	Sodium	50µ	1000 Daltons	0.4 meq/mL	Polyvalent Metal Ions	Exchanges Transition Metals and Divalent Cations for Na <sup>+</sup> . May be used to remove or retain Divalent Cations and Transition Metals from sample.
IC-RP	Polystyrene	-	550µ	-	-	Hydrophobic Components	Remove Surfactants, Organic Acids and other Organic Substances. Inorganic Ions pass through.

Maxi-Clean™ - Ion Chromatography Cartridges				
Packing	Bed Weight	Qty	Old Alltech #	Part.No
IC-OH	0.5mL	50	30262	LD0158
	1.5mL	25	30254	LD0153
IC-H	0.5mL	50	30264	LD0160
	1.5mL	25	30256	LD0154
IC-Ag	0.5mL	50	30266	LD0162
	1.5mL	25	30258	LD0155
IC-Ba	0.5mL	50	30268	LD0163
	1.5mL	25	30261	LD0157
IC-Na	0.5mL	50	30270	LD0164
	1.5mL	25	30263	LD0159
IC-Chelate	0.5mL	50	30250	LD0151
	1.5mL	25	30265	LD0161
IC-RP	0.5mL	50	30260	LD0156
	1.5mL	25	30252	LD0152



## Ion Exchange SPE Cartridges

- To Remove or Concentrate Basic or Acid Compounds in your Sample
- SCX & SAX Styrene/Divinylbenzene Sorbents

Maxi-Clean™ - Ion Exchange Cartridges				
Packing	Bed Weight	Qty	Old Alltech #	Part.No
SCX	600mg	50	21902	LD0120
	600mg	100	21903	LD0121
SAX	600mg	50	21907	LD0122
	600mg	100	21908	LD0123

Maxi-Clean™ Ion Exchange Sorbent Specification							
Packing	Base	Counter Ion	Average Particle Size	Functional Group	Exchange Capacity	Retains	Benefits
SCX	Styrene/DVB	Hydrogen	50µ	Benzene Sulfonic Acid	2.0 meq/mL	Cations, (+) Charged Compounds	Remove/Concentrate Basic Compounds
SAX	Styrene/DVB	Acetate	50µ	Tetramethyl Ammonium	1.0 meq/mL	Anions, (-) Charged Compounds	Remove/Concentrate Acidic Compounds

# Solid Phase Extraction - Accessories

## Vacuum Manifolds

- 12 position, 16 position and 24 position Vacuum Manifolds available for maximum productivity
- Glass chamber for visula monitoring
- Use standard Male Luer devices

These manifolds permit consistent extraction and filtration results. Multiple sample processing with these manifolds simplifies procedures and saves time. The manifolds consist of a clear glass chamber and lid to which a vacuum is applied to draw a sample through an SPE column, cartridge, or disk.

Adjustable racks placed in the glass vacuum chamber will accommodate a variety of sample collection vessels, including test tubes, autosampler vials, volumetric flasks, and Erlenmeyer flasks. Eluants are deposited directly into the collection vessel of choice via polypropylene, optional stainless steel, or Teflon needles. Drying attachments for the 12 and 24 port manifolds will direct a flow of air or nitrogen into the collection vessels to dry eluants prior to further analysis. Drying attachments can also be connected, via adapters, to SPE columns or cartridges in order to dry the column or cartridge prior to final elusion. Optional disposable solvent resistant polypropylene liners are available for the twelve port manifolds. These waste liners greatly simplify sample preparation, solvent disposal, and clean-up



12 Position Manifold and Accessories			
Description	Qty	Old Alltech #	Part.No
<b>12 Position Manifold</b>	<b>1</b>	<b>210351</b>	<b>LA0033</b>
<i>Replacement parts</i>			
Cover, Gasket & 12 Stopcocks	1	212001	LA0034
Glass Chamber	1	213212	LA0023
Vacuum Gauge, Valve & Glass Chamber	1	212304	LA0035
Collection Rak, Legs, Clips & Post*	1	212518	LA0036
Gaskets	2	212112	LA0037
Plate - 13mm	1		LA0038
Plate - Volumetric Flask	1		LA0039
Plate - 16mm Test Tube	1		LA0040
Plate - Autosampler Vials	1		LA0041
Plate - Dimple	1		LA0042
Plate - Base	1		LA0043
Waste Container	1	210033	LA0045

\* Contains 3 support posts, bottom plate, 13&16mm plates, autosampler vial plate, volumetric plate, 12 retention clips.



12 Position Manifold



Waste Container



24 Position Manifold

16 Position Manifold and Accessories			
Description	Qty	Old Alltech #	Part.No
<b>16 Position Manifold</b>	<b>1</b>		<b>LA0046</b>
<i>Replacement parts</i>			
Cover, Gasket & 16 Stopcocks	1		LA0047
Glass Chamber	1		LA0048
Vacuum Gauge, Valve & Glass Chamber	1		LA0050
Collection Rak, Legs, Clips & Post*	1		LA0051
Gaskets	2		LA0052
Plate - 13mm	1		LA0053
Plate - 16mm Test Tube	1		LA0054
Plate - Dimple	1		LA0055
Plate - Base	1		LA0056

\* Contains 3 support posts, bottom plate, 13&16mm plates, autosampler vial plate, volumetric plate, 12 retention clips.

24 Position Manifold and Accessories			
Description	Qty	Old Alltech #	Part.No
<b>24 Position Manifold</b>	<b>1</b>	<b>210224</b>	<b>LA0058</b>
<i>Replacement parts</i>			
Cover, Gasket & 24 Stopcocks	1	211224	LA0059
Glass Chamber	1	210124	LA0060
Vacuum Gauge, Valve & Glass Chamber	1	210324	LA0061
Collection Rak, Legs, Clips & Post*	1	210424	LA0062
Gaskets	2	210724	LA0063
Plate - 13mm	1		LA0064
Plate - 16mm Test Tube	1		LA0065
Plate - Dimple	1		LA0066
Plate - Base	1		LA0067

\* Contains 3 support posts, bottom plate, dimple plate, 13&16mm plates, 12 retention clips.

# Solid Phase Extraction - Accessories

## Manifold Accessories and Needles

- Replacement Parts for All Models
- Stainless Steel, Polypropylene and Teflon Needles
- Stopcocks

Manifold Accessories			
Description	Qty	Old Alltech #	Part.No
<i>Drying Attachments</i>			
12 Position Drying Attachemnt	1	212100	LA0020
16 Position Drying Attachemnt	1	212117	LA0021
24 Position Drying Attachemnt	1	212124	LA0022
<i>Stopcocks</i>			
12-16-24 Position Stopcocks	24	212112	LA0024
<i>Needles</i>			
Polypropylene Needles	24	210924	LA0025
Stainless Steel Needles	24	210824	LA0026
Teflon Needles	100	412410	LA0027
Valved Teflon Needle	25	411525	LA0028
<i>Accessories</i>			
Vacuum Gauge & Valve	1	212203	LA0029
Female Luer Fitting	2	212002	LA0030
Male Luer Fitting	2	212120	LA0031
Vacuum Manifold Plug	50	211234	LA0032



Teflon, Polypropylene and SS Needles



Stopcocks



12 Port Drying Attachment



Empty SPE Columns and Frits




Inlet Caps and Plugs

## SPE Empty Column and Frits

- Select Empty Reservoirs and Frits to Pack Your Own Custom SPE Columns


SPE Empty Column and Frits			
Description	Qty	Old Alltech #	Part.No
<i>Empty Polypropylene Columns</i>			
1.5mL	100	210001	LA0003
4.0mL	100	210104	LA0004
8.0mL	100	210208	LA0005
15.0mL	100	210315	LA0001
25.0mL	100	210425	LA0006
75.0mL	100	210575	LA0007
<i>20µ Polyethylene Frits</i>			
For 1.5mL Column	100	211401	LA0008
For 4.0mL Column	100	211404	LA0009
For 8.0mL Column	100	211408	LA0010
For 15.0mL Column	100	211412	LA0002
For 25.0mL Column	100	211416	LA0011
For 75.0mL Column	100	211775	LA0012
<i>Caps &amp; Plugs</i>			
Inlet Caps for 1.5mL	100	222000	LA0013
Inlet Caps for 4.0mL	100	220301	LA0014
Inlet Caps for 8.0mL	100	220600	LA0015
Inlet Caps for 15.0mL	100	221200	LA0017
Inlet Caps for 25.0mL	100	221006	LA0018
Inlet Caps for 75.0mL	100	227503	LA0019
Outlet Caps for all Size	100	220710	LA0016

## Other Products available from SepaChrom




**HPLC**

HPLC, UHPLC & IC Analytical Columns  
Vydac® Columns for Proteins and Peptides  
Guards Columns




**MEDIA**

DAVISIL® - Silica Gel for Flash, Prep and Industrial Purification  
Bonded Silica C18, Cyano, Diol, Amino  
Porosity 30Å- 2500Å



**PREP**

Prep Columns 10-200mmID  
Preparative and Process Systems  
Scale-up Method Development  
Packing Service



**FLASH**

PuriFlash™ Cartridges and Instruments for FLASH Chromatography  
TLC Plates and Accessories for Flash



**SPE**

SPE Columns  
SPE Columns for Ion Chromatography  
Syringe Filters  
SPE Accessories



**VIALS**

Vials for HPLC  
Vials for Sampling Application  
Head Space Vials  
Crimper & Decapper  
Sampling Accessories



**GC**

Capillary Columns SepaChrom :  
SepaFlex & Econo-Sep  
  
Capillary Column Heliflex®  
and Econo-Cap™



**Accessori HPLC-GC**

Tubing, Fittings and Ferrules  
Syringes and Septa  
Filters and Frits  
Valves and Accessories for Mobile Phase  
Carrier Gas Traps

## Company Profile

### About us :

**SepaChrom** is a new company specialized in **Chromatography**. **SepaChrom** is the brainchild of the founders to create a dedicated reality, unique and able to support the **Chromatography Users** optimizing their challenges.

Our Core competence is the manufacturing and trading of **High-Quality** products for **GC** and **HPLC Analytical** scale, **Preparative** and **Flash**, including consumables and accessories, till **Process** scale purification.

### Our Mission :

Decades of experience of our team, combined with a range of High Quality selected products and the most efficient technological solutions, allows **SepaChrom** to be a reference to Pharma, Biotech, Chemical, Food and Beverage, Cosmetic, Environmental, Clinical and Petrochemical industries, at R&D department as well at QC laboratories and Production. Our commitment is to provide the Highest Technical Support that Chromatographers expect from **Your Specialist in Chromatography**

### Customers in Mind :

The success of **SepaChrom** depends by the complete **satisfaction** of our customers, and consequently by their success.

**SepaChrom** expertise result in a High-Quality support **pre & after** sales to the Chromatographic Users. This include a **fast delivery** of your products from our warehouse to everywhere.



Your Specialists in Chromatography

**Sepachrom Srl**

Via Trento 33  
20017 RHO MI - Italy

T.: +39 02 365 41 401

F.: +39 02 365 48 378

E.: [info@sepachrom.com](mailto:info@sepachrom.com)

W.: [www.sepachrom.com](http://www.sepachrom.com)