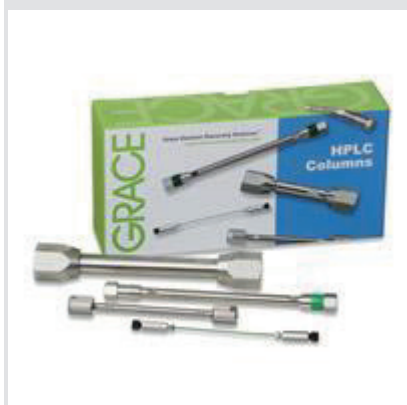


Grace: Alltima



Alltima HPLC columns are high quality phases designed for general purpose applications.

The general features of Alltima include:

- Base deactivated silica phases
- Stable bonding for long column lifetime
- Multiple selectivity options

Phase Specifications

Alltima Phase	Particle Size (um)	Chromatographic Properties	Application/Benefit	USP Code
Alltima C18	3, 5, 10	Classic reversed-phase retention and selectivity	High quality hydrophobic general purpose C18	L1
Alltima C18 LL	5	Lower carbon load than traditional Alltima C18	Reversed-phase applications that require a less hydrophobic C18 phase	L1
Alltima C8	3, 5	Lower capacity compared to C18 phases	Reversed-phase applications where C18 is too retentive	L7
Alltima Phenyl	3, 5	Less hydrophobic than C18 phase	Selective for aromatic compounds	L11
Alltima Cyano	3, 5	General purpose cyano suitable for normal or reversed-phase use	Rugged normal phase applications	L10
Alltima Amino	3, 5	General purpose amino suitable for normal or reversed-phase use	Use for carbohydrate analysis or as a weak anion exchanger	L8
Alltima Silica	3, 5, 10	Highly polar phase	General purpose normal phase applications	L3

Other Products available from SepaChrom

 <p>HPLC</p>	<p>SepaChrom</p> <p>HPLC, UHPLC Silica Based Columns for Analytical Applications Vydac® Columns for Proteins and Peptides Separations Polymer Base Columns for Carbohydrate & Organic Acids Analysis Chiral HPLC Columns Ion Chromatography Columns for Anions and Cations Analysis</p>	 <p>MEDIA</p>	<p>Irregular and Spherical Silica Gel for Flash, Prep & Industrial Purification Bonded Silica C18, Cyano, Diol, Amino Wide Range Porosity (30Å- 2500Å) and Particle Size (10µ-200µ) for Any Application Polymer Based Resin for Reversed Phase and Ion Exchange Chromatography</p>
 <p>PREP</p>	<p>10mm-25mmID Packed Prep Columns for Lab Scale Purification 25mm-100mmID Packed & Empty, Flanged & Spring Column Technology 50mm-2000mmID Process Scale Chromatography Columns & Systems, Flanged & DAC Technology Scale-up Method Development & Packing Service</p>	 <p>FLASH</p>	<p>Instruments for Flash and Prep Chromatography up to 750mL/min & 250 bar Pressure. 190-840 Multi Wavelength & Scan Collection, Integrated ELSD, MS Simple Quad Detector Flash Columns for All Existing Flash Instruments : Silica, Reverse Phase, CN, Diol, NH₂, Chiral Phases, 15µ to 50µ Particle Size</p>
 <p>SPE</p>	<p>Silica Based SPE Cartridges for Pharma, Environmental, Food&Beverage Applications. Polymer Base SPE Cartridges for Clinical & Forensic Applications. Ion Chromatography SPE Cartridges Accessories for SPE Syringe Filters & QuEChERS</p>	 <p>VIALS</p>	<p>Autosampler Vials for HPLC, IC e GC Sampling Vials Head Space Vials Crimper & Decapper and Sampling Accessories</p>
 <p>GC</p>	<p>High Performance GC Capillary Column SepaChrom : SepaFlex : Full Range of GC Capillary Columns, MS Columns, ChiralFlex, UltraMet-HT, SpeedyFlex Econo-Sep : Batch Tested Common GC Capillary Columns GC Capillary Column Heliflex® & Econo-Cap™</p>	 <p>Accessori HPLC-GC</p>	<p>SS & PEEK Tubing for Analytical, Preparative and Ion Chromatography Fittings, Ferrule & Valves for HPLC, IC and GC Syringes and Septa for GC Traps for GC Gas Lines Gas Generators</p>

Company Profile

About us :

SepaChrom is a new company specialising in **Chromatography**. **SepaChrom** is the brainchild of the founders who wanted to create a dedicated and unique company able to support **Chromatography Users** in optimizing their challenges.

Our Core competence is the manufacture, sale and support of **High-Quality** products for **GC, Analytical and Preparative** scale **HPLC** and **Flash** purification, including consumables and accessories, through **Process** scale purification.

Our Mission :

Our team has decades of experience, which, combined with a range of High Quality selected products and the most efficient technological solutions, allows **SepaChrom** to support Pharma, Biotech, Chemical, Food and Beverage, Cosmetic, Environmental, Clinical and Petrochemical industries, in R&D departments as well in QC laboratories and Production. Our commitment is to provide the Highest level of Technical Support that Chromatographers expect from **Your Specialist in Chromatography**

Customers in Mind :

The success of **SepaChrom** is driven by complete **satisfaction** of our customers, and consequently by their success.

SepaChrom's expertise results in High-Quality **pre & post** sale support to the Chromatographic Users. This includes **fast delivery** of your products from our warehouse to your location.



Sepachrom Srl
Via Trento 33
20017 RHO MI - Italy

T.: +39 02 365 41 401
F.: +39 02 365 48 378
E.: info@sepachrom.com
W.: www.sepachrom.com