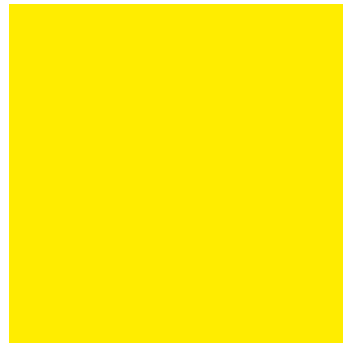
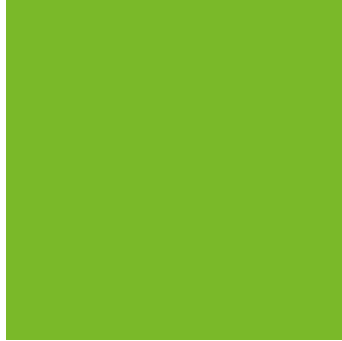
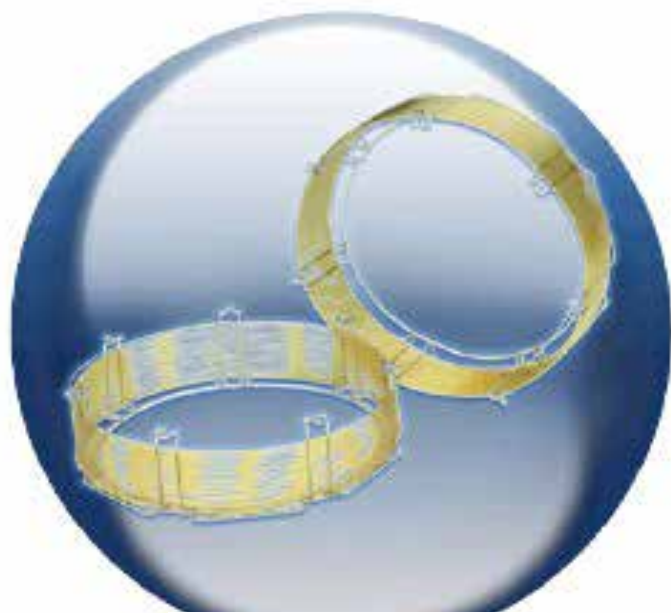


*Your Specialists in Chromatography*



## *SepaFlex e EcoSep* High Performance GC Capillary Columns



  
MADE IN ITALY

**SepaChrom**

# SepaFlex - High Performance Capillary Columns

**SepaChrom** offer two product lines of Capillary Columns for Gaschromatography, **SepaFlex** and **EcoSep**. The Capillary Columns **SepaFlex** are the highest quality columns available today in the market. The range includes all the conventional columns, MS, Wide-Bore, Fast, HT, Chiral and Metal. The strict parameters of our QC tests provide the undisputed quality and the highest column-to-column reproducibility, at a very competitive price. Our Capillary Columns **EcoSep** are the best choice of Quality/Price ratio available today in the market. They are Batch Tested and the saving on QC is forwarded to the customer. This does not affect the High Quality and their performance is guaranteed.

In the below table the **SepaFlex** and **EcoSep** Capillary Column specifications with full details of the stationary phases and the typical applications.

Name	QC Test	Max Temp	Stationary Phase	Application
<b>SepaFlex Product Line</b>				
<b>SepaFlex Sepa-1</b>	Individually	350°C	100% Methylpolysiloxane	Solvent Impurities, PCB, Simulated Distillation, Gas, Natural Gas, Drugs, Essential Oils, Semi Volatile, Pesticides, Phenols
<b>SepaFlex Sepa-1HT</b>	Individually	380°C	100% Methylpolysiloxane for High Temperature Application	Rapid Analysis of High Boiling Compounds, Waxes, Crude Oils, Triglycerides
<b>SepaFlex Sepa-1ms</b>	Individually	350°C	100% Methylpolysiloxane Low Bleeding	see Sepa-1
<b>SepaFlex Sepa-5</b>	Individually	350°C	5% Phenyl/95% Methylpolysiloxane	Solvent impurities, PCB, Hydrocarbons, Essential Oils, Semi Volatile, Pesticides
<b>SepaFlex Sepa-5ms</b>	Individually	350°C	5% Phenyl/95% Methylpolysiloxane Low Bleeding	see Sepa-5
<b>SepaFlex Sepa-624</b>	Individually	280°C	6% Cyanopropylphenyl 94% Methylpolysiloxane	Ideal for Organic Volatile, Aromatics, Hydrocarbons, Solvents, EPA Methods EPA 624, 524, 601, 602, 8240, 8260
<b>SepaFlex Sepa-20</b>	Individually	340°C	20% Phenyl/80% Methylpolysiloxane	Ideal as Confirmation Column, Solvents
<b>SepaFlex Sepa-1701</b>	Individually	280°C	14% Cyanopropylphenyl 86% Methylpolysiloxane	Residual Solvents, PCB, Alcohols, Oxygenates, Pesticides. Ideal as Confirmation Column and GCxGC use.
<b>SepaFlex Sepa-35</b>	Individually	340°C	35% Phenyl/65% Methylpolysiloxane	Pesticides, PCB, Substituted Polar Compounds, Phenols. Ideal as Confirmation Column
<b>SepaFlex Sepa-35ms</b>	Individually	340°C	35% Phenyl/65% Methylpolysiloxane Low Bleeding	see Sepa-35
<b>SepaFlex Sepa-210</b>	Individually	250°C	Trifluoropropyl Methylpolysiloxane	Freon e Fluorocarbons, Ketones, Alcohols, Organophosphorous Pesticides
<b>SepaFlex Sepa-225</b>	Individually	260°C	25% Cyanopropyl/25% Phenyl 50% Methylpolysiloxane	Carbohydrates, Sterols, Aromatic Compounds
<b>SepaFlex Sepa-50</b>	Individually	340°C	50% Phenyl/50% Methylpolysiloxane	Phtalates, Carbohydrates, Sterols, FAMES, Aromatic Compounds. Confirmation Column.
<b>SepaFlex Sepa-WAX</b>	Individually	250°C	100% Polyethylene Glycol (PEG)	FAMES, Aromatic Compounds, Essential Oils, Aromatic BTEX, Solvents, Alcohols
<b>SepaFlex Sepa-WA-Xms</b>	Individually	250°C	100% Polyethylene Glycol (PEG) Low Bleeding	see Sepa-WAX
<b>SepaFlex Sepa-1000</b>	Individually	250°C	100% Polyethylene Glycol (PEG) Acid Modified	Ideal for Free Fatty Acids, FAMES, Aromatic BTEX, Aromatic Compounds, Alcohols, Polar Compounds

<b>EcoSep Product Line</b>				
<b>EcoSep-1</b>	Batch	350°C	100% Methylpolysiloxane	see Sepa-1
<b>EcoSep-5</b>	Batch	350°C	5% Phenyl/95% Methylpolysiloxane	see Sepa-5
<b>EcoSep-20</b>	Batch	340°C	20% Phenyl/80% Methylpolysiloxane	see Sepa-20
<b>EcoSep-WAX</b>	Batch	250°C	100% Polyethylene Glycol (PEG)	see Sepa-WAX
<b>EcoSep-1000</b>	Batch	250°C	100% Polyethylene Glycol (PEG) Acid Modified	see Sepa-1000

To better understand **SepaFlex** and **EcoSep** column specification the following table lists the cross-reference similar columns, a guide to the related EPA Methods, and the corresponding USP designation.

Name	Similar to	EPA Method	USP Designation
<b>Sepa-1 / EcoSep-1</b>	DB-1, HP-1, ZB-1, 007-1, Rtx-1, BP-1, SPB-1, CP Sil 5 CB, SE-30, OV-1, AT-1, EC-1, ZB-1	EPA 504.1, 505, 551, 606, 612, 8141A/B	USP G1, G2, G9, G38
<b>Sepa-1HT</b>	DB-1 HTAT-1ht, Rxi-1HT, ZB-1HT, Petrocol 2887		USP G1, G2, G38
<b>Sepa-1ms</b>	DB-1ms (UI), HP-1ms, ZB-1ms, Rtx-1ms, Equity-1, CP Sil 5 CBms, AT-1ms, SolGel-1ms	EPA 504.1, 505, 606	USP G1, G2, G9, G38
<b>Sepa-5 / EcoSep-5</b>	DB-5, HP-5, ZB-5, 007-5, Rtx-5, BP-5, SPB-5, CP Sil 8 CB, Equity-5, AT-5, EC-5, SE-54	EPA 506,611,604,607,608,8015,8041,8082,8091	USP G27, G36, G41
<b>Sepa-5ms</b>	DB-5ms (UI), HP-5ms, ZB-5ms, 007-5ms, Rtx-5ms, BPX-5, Equity-5	EPA 513,528,552,610,613,625,8100,8141A/B	USP G27, G36, G41
<b>Sepa-624</b>	DB-624, HP-624, ZB-624, 007-624, Rtx-624, Vocol, SPB-624, VF-624ms, AT-624	EPA 501.3,502.1,502.2,601,624,1624,8020,8021	USP G43, 467 (OVIs)
<b>Sepa-20 / EcoSep-20</b>	007-07, Rtx-20, SPB-20, AT-20, EC-20, Vocol		USP G28, G32
<b>Sepa-1701</b>	DB-1701,HP-1701,ZB-1701,007-1701,Rtx-1701,BP-10,SPB-1701,CP Sil 19 CB, Equity-1701, AT-1701	EPA 513,515,2,552,2,607,619,622,8091,8121	USP G46
<b>Sepa-35</b>	DB-35, HP-35, ZB-35, 007-11, RTX-35, SPB-35, SPB-608, AT-35	EPA 507,508,552,614,615,622	USP G28, G32, G42
<b>Sepa-35ms</b>	DB-35ms, BPX-35, BPX-608, Rtx-35ms	EPA 507,508,552,614,615,622	USP G28, G32, G42
<b>Sepa-210</b>	DB-200, DB-210, 007-210, Rtx-200, SP-2401, VF-200ms, OV-210, QF-1	EPA 551, 612, 625, 8095	USP G6
<b>Sepa-225</b>	DB-225, HP-225, 007-225, Rtx-225, BP-225, CP Sil 43 CB	EPA 8095	USP G7, G19, G26
<b>Sepa-50</b>	DB-17, HP-17, ZB-50, 007-17, Rtx-17, BPX-50, SPB-50, CP Sil 24 CB, AT-50	EPA 604, 608, 619, 8060, 8081	USP G3, G17
<b>Sepa-WAX /EcoSep-WAX</b>	DB-Wax, HP-Wax, ZB-Wax, 007-CW, Rtx-Wax, BP-20, CP Wax 52 CB	EPA 602, 603, 619, 8015C, USP467 (OVIs)	USP G14, G15, G16
<b>Sepa-WAXms</b>	Stabilwax, ZB-Wax Plus, InnoWax, VF-WaxMs, Supelcowax-10, AT-WAXms	EPA 602, 603, 619, 8015C, 8121	USP G14, G15, G16
<b>Sepa-1000 /EcoSep-1000</b>	DB-FFAP, 007-FFAP, Stabilwax-DA, BP-21, SPB-1000,Nukol, CP Wax 58 CB, AT-1000, EC-1000, ZB-FFAP	EPA 8032	USP G14,G15,G16,G25,G35,G39

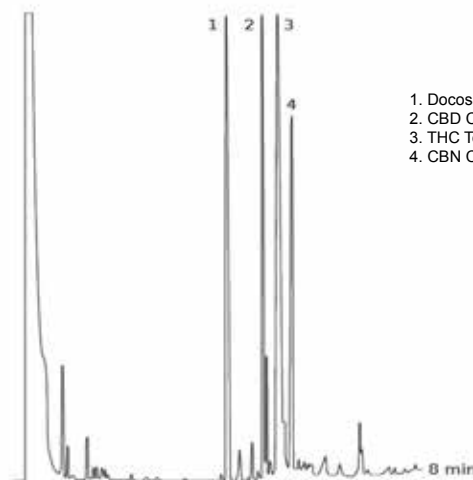
## SepaFlex - Sepa-1

- Non Polar Stationary Phase
- Ideal for General Purpose Application
- Similar to AT-1, EC-1, DB-1, HP-1, CP-Sil 5 CB, RTX®-1, OV-1, SPB™-1, ZB-1, BP-1, SE-30, 007-1

SepaFlex Sepa-1 Specifications	
Phase	100% Dimethylpolysiloxane
Polarity	Non Polar
USP Designation	G1 - G2 - G38
Ideal for	Generic Applications

Length Meters	Internal Diameter mm	Film μ	Stock N.
10m	0.10mm	0.10μ	PA0001
	0.10mm	0.40μ	PA0002
	0.18mm	0.20μ	PA0005
	0.18mm	0.40μ	PA0006
	0.25mm	0.10μ	PA0009
	0.25mm	0.20μ	PA0010
	0.25mm	0.25μ	PA0011
	0.32mm	0.10μ	PA0019
	0.32mm	0.25μ	PA0020
	0.32mm	0.30μ	PA0021
	0.53mm	0.25μ	PA0028
	0.53mm	1.20μ	PA0029
15m	0.53mm	2.65μ	PA0030
	0.53mm	5.00μ	PA0027
	0.25mm	0.10μ	PA0042
	0.25mm	0.20μ	PA0043
	0.25mm	0.25μ	PA0044
	0.25mm	1.00μ	PA0045
	0.32mm	0.10μ	PA0073
	0.32mm	0.25μ	PA0074
	0.32mm	0.30μ	PA0075
	0.32mm	1.00μ	PA0076
	0.32mm	3.00μ	PA0077
	0.32mm	5.00μ	PA0078
25m	0.53mm	0.15μ	PA0104
	0.53mm	0.25μ	PA0105
	0.53mm	0.50μ	PA0106
	0.53mm	1.00μ	PA0109
	0.53mm	1.20μ	PA0107
	0.53mm	1.50μ	PA0108
	0.53mm	2.65μ	PA0110
	0.53mm	3.00μ	PA0111
	0.53mm	5.00μ	PA0112
	0.25mm	0.20μ	PA0139
	0.32mm	0.30μ	PA0146
	0.53mm	1.20μ	PA0152

### Drug of Abuse - Cannabinoids



1. Docosane (I.S.)
2. CBD Cannabidiol
3. THC Tetrahydrocannabinol
4. CBN Cannabinol

Column : SepaFlex Sepa-1 - 15m x 0,25mm x 0,25μ (Part n. PA0044)

Injection : Split 280°C, 1,0μL, 1:50 Split Ratio  
 Detector : FID 320°C  
 Oven Temp : 120°C, 25°C/min, 310°C  
 Carrier Gas : Hydrogen 30kPa

Length Meters	Internal Diameter mm	Film μ	Stock N.	
30m	0.25mm	0.10μ	PA0161	
	0.25mm	0.20μ	PA0162	
	0.25mm	0.25μ	PA0163	
	0.25mm	1.00μ	PA0164	
	0.32mm	0.10μ	PA0200	
	0.32mm	0.25μ	PA0201	
	0.32mm	0.30μ	PA0202	
	0.32mm	1.00μ	PA0203	
	0.32mm	3.00μ	PA0204	
	0.32mm	5.00μ	PA0205	
	0.53mm	0.50μ	PA0240	
	0.53mm	1.00μ	PA0243	
50m	0.53mm	1.20μ	PA0241	
	0.53mm	1.50μ	PA0242	
	0.53mm	2.65μ	PA0244	
	0.53mm	3.00μ	PA0245	
	0.53mm	5.00μ	PA0246	
	0.25mm	0.20μ	PA0282	
	0.32mm	0.30μ	PA0287	
	0.53mm	1.20μ	PA0292	
	60m	0.25mm	0.10μ	PA0296
		0.25mm	0.25μ	PA0297
		0.25mm	1.00μ	PA0298
		0.32mm	0.10μ	PA0321
0.32mm		0.25μ	PA0322	
0.32mm		1.00μ	PA0323	
0.32mm		3.00μ	PA0324	
0.32mm		5.00μ	PA0325	
0.53mm		0.50μ	PA0344	
0.53mm		1.00μ	PA0347	
0.53mm		1.20μ	PA0345	
0.53mm		1.50μ	PA0346	
0.53mm	3.00μ	PA0348		
0.53mm	5.00μ	PA0349		

Spending Review ?

**Choose EcoSep-1!**

Don't compromise the performance.

At an affordable price!



## SepaFlex - Sepa-1ms

- Guaranteed low-bleed characteristics
- Specifically designed for MS detector
- Similar to DB-1ms, HP-1ms, CP-Sil 5 CB MS, Rtx-1ms, AT-1ms, ZB-1ms, Equity-1, SolGel-1ms

SepaFlex Sepa-1ms Specifications	
Phase	Low Bleeding 100% Dimethylpolysiloxane
Polarity	Non Polar
USP Designation	G1 - G2 - G38
Ideal for	Analysis with MS Detector

Length Meters	Internal Diameter mm	Film $\mu$	Stock N.
15m	0.25mm	0.25 $\mu$	PA0052
	0.32mm	0.25 $\mu$	PA0086
30m	0.25mm	0.10 $\mu$	PA0172
	0.25mm	0.25 $\mu$	PA0173
	0.32mm	0.10 $\mu$	PA0214
	0.32mm	0.25 $\mu$	PA0215
60m	0.25mm	0.25 $\mu$	PA0302
	0.32mm	0.25 $\mu$	PA0329

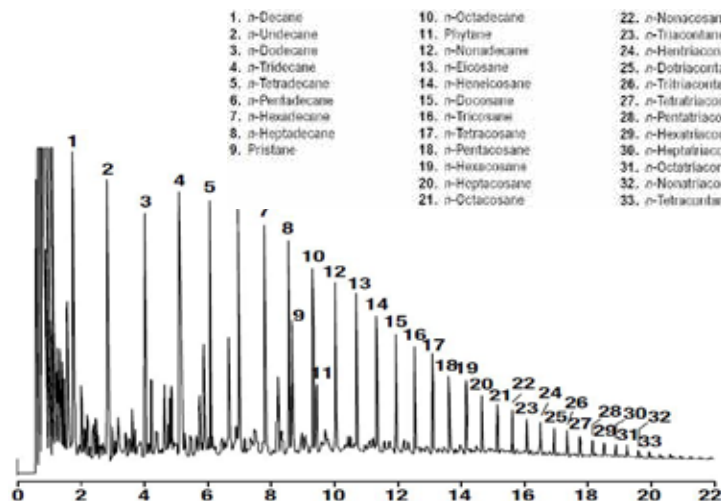
## SepaFlex - Sepa-1ht

- Low Bleeding and Max Inertness
- Ideal for high Temp Applications (380°C)
- Similar to AT-1ht, DB-1ht, Rxi-1HT, ZB-1HT, Petrocol 2887

SepaFlex Sepa-1ht Specifications	
Phase	100% Dimethylpolysiloxane
Polarity	Non Polar
USP Designation	G1 - G2 - G38
Ideal for	Analysis at High Temperature

Length Meters	Internal Diameter mm	Film $\mu$	Stock N.
15m	0.25mm	0.10 $\mu$	PA0051
30m	0.25mm	0.10 $\mu$	PA0171
60m	0.25mm	0.10 $\mu$	PA0301

### Texas Crude Oil



- |                  |                   |                        |
|------------------|-------------------|------------------------|
| 1. n-Decane      | 10. n-Octadecane  | 22. n-Nonacosane       |
| 2. n-Undecane    | 11. Phytane       | 23. n-Triacontane      |
| 3. n-Dodecane    | 12. n-Henriacene  | 24. n-Hentriacontane   |
| 4. n-Tridecane   | 13. n-Eicosane    | 25. n-Dotriacontane    |
| 5. n-Tetradecane | 14. n-Heneicosane | 26. n-Tetracontane     |
| 6. n-Pentadecane | 15. n-Docosane    | 27. n-Pentatriacontane |
| 7. n-Hexadecane  | 16. n-Tricosane   | 28. n-Hexatriacontane  |
| 8. n-Heptadecane | 17. n-Tetracosane | 29. n-Heptatriacontane |
| 9. Pristane      | 18. n-Pentacosane | 30. n-Octatriacontane  |
|                  | 19. n-Hexacosane  | 31. n-Nonatriacontane  |
|                  | 20. n-Heptacosane | 32. n-Tetracontane     |
|                  | 21. n-Octacosane  | 33. n-Tetracontane     |

Column : SepaFlex Sepa-1ht - 15m x 0,25mm x 0,1 $\mu$  (Part n. PA0051)

Detector : FID 390°C

Oven Temp : 70°C (2 min hold) a 380°C a 15°C/min

Carrier Gas : Helium 1.6ml/min (45cm/sec)

## SepaFlex - Sepa-20

- Unique polarity between non-polar and mid-range
- Similar to AT-20, EC-20, Rtx-20, 007-20, SPB-20, Vocol, PE-7

SepaFlex Sepa-20 Specifications	
Phase	20% Phenyl 80% Methylpolysiloxane
Polarity	Intermediate Polarity
USP Designation	G28 - G32
Ideal for	Volatile Compounds and Solvents

Length Meters	Internal Diameter mm	Film $\mu$	Stock N.
10m	0.53mm	1.20 $\mu$	PA0032
	0.25mm	0.25 $\mu$	PA0053
15m	0.32mm	0.25 $\mu$	PA0087
	0.53mm	1.00 $\mu$	PA0120
	0.53mm	1.20 $\mu$	PA0119
25m	0.53mm	1.20 $\mu$	PA0155
	0.25mm	0.25 $\mu$	PA0174
30m	0.32mm	0.25 $\mu$	PA0216
	0.53mm	1.00 $\mu$	PA0256
	0.53mm	1.20 $\mu$	PA0255
	0.53mm	1.20 $\mu$	PA0293
50m	0.53mm	1.20 $\mu$	PA0293
	0.25mm	0.25 $\mu$	PA0303
	0.32mm	0.25 $\mu$	PA0330
60m	0.53mm	1.00 $\mu$	PA0354
	0.53mm	1.20 $\mu$	PA0353
	0.53mm	3.00 $\mu$	PA0355

## SepaFlex - Sepa-210

- Similar to DB-210, Rtx-200, OV-202, OV-210, OV-215, QF-1, SP-2401, RSL-400

SepaFlex Sepa-210 Specifications	
Phase	Trifluoropropyl Methylpolysiloxane
Polarity	Polar
USP Designation	G6
Ideal for	Ketons, Aldehydes, Glycols, Herbicides

Length Meters	Internal Diameter mm	Film $\mu$	Stock N.
10m	0.25mm	0.20 $\mu$	PA0014
	0.53mm	1.20 $\mu$	PA0033
15m	0.25mm	0.25 $\mu$	PA0054
	0.25mm	0.50 $\mu$	PA0055
	0.32mm	0.15 $\mu$	PA0088
	0.32mm	0.25 $\mu$	PA0089
25m	0.53mm	1.00 $\mu$	PA0122
	0.53mm	1.20 $\mu$	PA0121
	0.53mm	1.20 $\mu$	PA0156
	0.25mm	0.25 $\mu$	PA0175
30m	0.25mm	0.50 $\mu$	PA0176
	0.32mm	0.15 $\mu$	PA0213
	0.32mm	0.25 $\mu$	PA0217
	0.32mm	0.50 $\mu$	PA0218
	0.53mm	1.00 $\mu$	PA0258
	0.53mm	1.20 $\mu$	PA0257
60m	0.25mm	0.25 $\mu$	PA0304
	0.32mm	0.30 $\mu$	PA0331

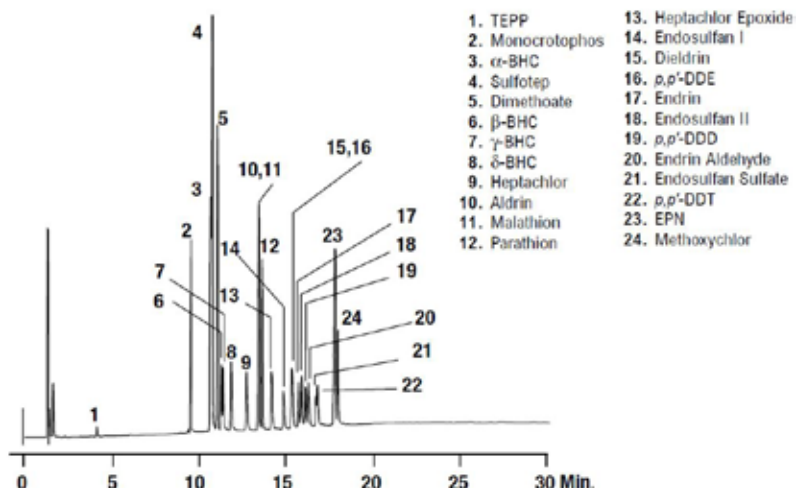
## SepaFlex - Sepa-5

- Non Polar Phase
- Ideal for General Purpose Application
- Similar to DB-5, HP-5, CP-Sil 8 CB, AT-5, EC-5, 007-5, RTX®-5, SPB™-5, Equity-5, SE-54, ZB-5

SepaFlex Sepa-5 Specifications	
Phase	5% Phenyl 95% Methylpolysiloxane
Polarity	Non Polar
USP Designation	G27 - G36
Ideal for	General Purpose Applications

Length Meters	Internal Diameter mm	Film $\mu$	Stock N.
10m	0.10mm	0.10 $\mu$	PA0003
	0.10mm	0.40 $\mu$	PA0004
	0.25mm	0.20 $\mu$	PA0016
	0.32mm	0.30 $\mu$	PA0025
	0.53mm	0.25 $\mu$	PA0037
	0.53mm	1.20 $\mu$	PA0038
	0.53mm	2.65 $\mu$	PA0039
	0.53mm	5.00 $\mu$	PA0040
15m	0.25mm	0.10 $\mu$	PA0061
	0.25mm	0.20 $\mu$	PA0062
	0.25mm	0.25 $\mu$	PA0063
	0.25mm	1.00 $\mu$	PA0064
	0.32mm	0.10 $\mu$	PA0093
	0.32mm	0.25 $\mu$	PA0094
	0.32mm	0.30 $\mu$	PA0095
	0.32mm	1.00 $\mu$	PA0096
	0.53mm	0.25 $\mu$	PA0124
	0.53mm	0.50 $\mu$	PA0125
25m	0.53mm	1.00 $\mu$	PA0128
	0.53mm	1.20 $\mu$	PA0126
	0.53mm	1.50 $\mu$	PA0127
	0.53mm	3.00 $\mu$	PA0129
	0.53mm	5.00 $\mu$	PA0130
	0.25mm	0.20 $\mu$	PA0144
	0.32mm	0.30 $\mu$	PA0150
	0.53mm	1.20 $\mu$	PA0159

## Chlorinated & Organophosphorus Pesticides



Column : SepaFlex Sepa-5 - 30m x 0,32mm x 0,25 $\mu$  (Part n. PA0225)  
 Detector : NPD  
 Oven Temp : 100°C (2 min), 10°C/min, 280°C  
 Carrier Gas : Helium 1mL/min

Length Meters	Internal Diameter mm	Film $\mu$	Stock N.
30m	0.25mm	0.10 $\mu$	PA0184
	0.25mm	0.25 $\mu$	PA0185
	0.25mm	0.50 $\mu$	PA0186
	0.25mm	1.00 $\mu$	PA0187
	0.32mm	0.10 $\mu$	PA0224
	0.32mm	0.25 $\mu$	PA0225
	0.32mm	0.30 $\mu$	PA0226
	0.32mm	1.00 $\mu$	PA0227
	0.53mm	0.50 $\mu$	PA0264
	0.53mm	1.00 $\mu$	PA0267
	0.53mm	1.20 $\mu$	PA0265
	0.53mm	1.50 $\mu$	PA0266
	0.53mm	2.65 $\mu$	PA0268
	0.53mm	3.00 $\mu$	PA0372
	0.53mm	5.00 $\mu$	PA0269
	50m	0.25mm	0.20 $\mu$
0.32mm		0.30 $\mu$	PA0290
0.53mm		1.20 $\mu$	PA0294
60m	0.25mm	0.10 $\mu$	PA0309
	0.25mm	0.20 $\mu$	PA0310
	0.25mm	0.25 $\mu$	PA0311
	0.25mm	1.00 $\mu$	PA0312
	0.32mm	0.10 $\mu$	PA0334
	0.32mm	0.25 $\mu$	PA0335
	0.32mm	0.30 $\mu$	PA0336
	0.32mm	1.00 $\mu$	PA0337
	0.53mm	0.50 $\mu$	PA0357
	0.53mm	1.00 $\mu$	PA0360
	0.53mm	1.20 $\mu$	PA0358
	0.53mm	1.50 $\mu$	PA0359
	0.53mm	3.00 $\mu$	PA0361
0.53mm	5.00 $\mu$	PA0362	



Make your purchases with confidence.  
 If you are not satisfied you can return the column and you will be immediately refunded!



## SepaFlex - Sepa-5ms

- Low Bleeding and Max Inertness
- Specifically designed for MS detector
- Similar to DB-5ms, CP-Sil 8 CB MS, Rtx-5ms, ZB-5ms, AT-5ms, 007-5MS

SepaFlex Sepa-5ms Specifications	
Phase	Low Bleeding 5% Phenyl 95% Methylpolysiloxane *
Polarity	Non Polar
USP Designation	G27 - G36
Ideal for	Analysis with MS Detector

Length Meters	Internal Diameter mm	Film $\mu$	Stock N.
15m	0.25mm	0.25 $\mu$	PA0066
	0.25mm	0.10 $\mu$	PA0190
	0.25mm	0.25 $\mu$	PA0191
30m	0.25mm	0.50 $\mu$	PA0192
	0.25mm	1.00 $\mu$	PA0193
	0.32mm	0.10 $\mu$	PA0230
	0.32mm	0.25 $\mu$	PA0231
	0.32mm	1.00 $\mu$	PA0232
	0.25mm	0.10 $\mu$	PA0313
60m	0.25mm	0.25 $\mu$	PA0314
	0.25mm	1.00 $\mu$	PA0315
	0.32mm	0.25 $\mu$	PA0338

\* Also available with Silphenylene phase

## SepaFlex - Sepa-50

- Column for General Purpose Applications
- Similar to RTX-50, DB-17, DB-17ht, DB-17ms, HP-50+, CP-Sil 24CB, ZB-50, AT-50, 007-17

SepaFlex Sepa-50 Specifications	
Phase	50% Phenyl 50% Methylpolysiloxane
Polarity	Intermediate Polarity
USP Designation	G3
Ideal for	Pesticides, Herbicides, Phtalate Esters, Phenols & Basic Compounds

Length Meters	Internal Diameter mm	Film $\mu$	Stock N.
15m	0.25mm	0.25 $\mu$	PA0065
	0.32mm	0.25 $\mu$	PA0097
	0.53mm	1.00 $\mu$	PA0131
30m	0.25mm	0.25 $\mu$	PA0188
	0.32mm	0.25 $\mu$	PA0228
	0.53mm	1.00 $\mu$	PA0271

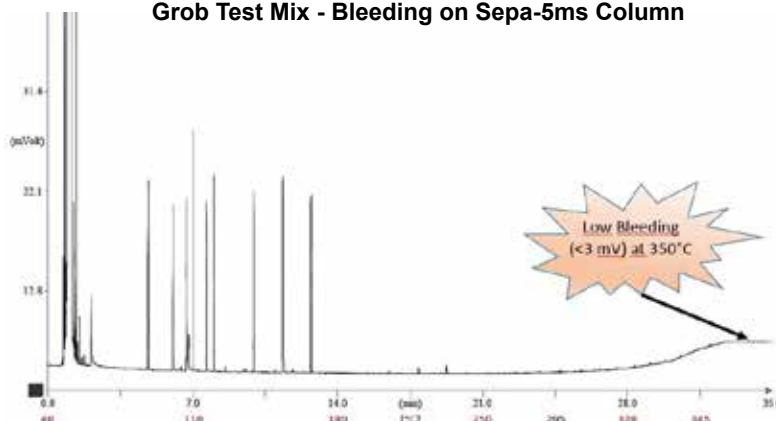


Looking for Tubing - Stainless Steel, Copper, Aluminium, Teflon, PEEK ?

Ask a Quote to

[info@sepachrom.com](mailto:info@sepachrom.com)

## Grob Test Mix - Bleeding on Sepa-5ms Column



Column : SepaFlex Sepa-5ms - 30m x 0.25mm x 0.25 $\mu$  (Part n. PA0191)

Injection : 1 $\mu$ L, Split Inj. 250°C, Split Ratio 1.2

Detector : FID 250°C

Oven Temp : 40°C to 350°C, 10°C/min

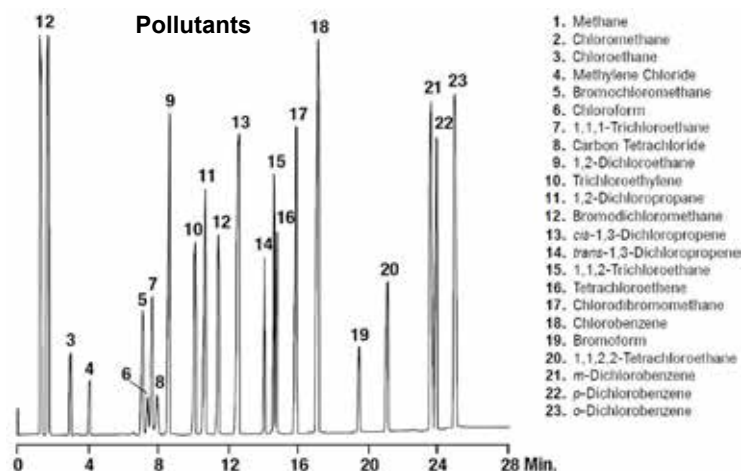
Carrier Gas : Hydrogen 80kPa

## SepaFlex - Sepa-624

- Designed for EPA 624 Method
- Similar to DB-1301, HP-1301, HP-624, DB-624, AT-624, RTX-624, 007-624, SPB-624,, ZB-624, DB-Select 624 CB

SepaFlex Sepa-624 Specifications	
Phase	6% Cyanopropylphenyl 95% Dimethylpolysiloxane
Polarity	Intermediate Polarity
USP Designation	G43
Ideal for	EPA 624 - 524 - 601 - 602 - 8240 - 8260 - Solvents

Length Meters	Internal Diameter mm	Film $\mu$	Stock N.
30m	0.25mm	1.40 $\mu$	PA0194
	0.32mm	1.80 $\mu$	PA0233
	0.32mm	3.00 $\mu$	PA0234
	0.53mm	3.00 $\mu$	PA0273
60m	0.25mm	1.40 $\mu$	PA0316
	0.32mm	1.80 $\mu$	PA0339
	0.53mm	3.00 $\mu$	PA0364
75m	0.53mm	3.00 $\mu$	PA0369



Column : SepaFlex Sepa-624 - 30m x 0.53mm x 3 $\mu$  (Part n. PA0273)

Detector : FID

Oven Temp : 35°C (5 min hold) to 140°C at 5°C/min

Carrier Gas : Helium 5ml/min

## SepaFlex - Sepa-35

- Intermediate Polarity for General Purpose Applications
- Similar to DB-35, HP-35, RTX-35, SPB-608, SPB-35, HP-35, AT-35, ZB-35

SepaFlex Sepa-35 Specifications	
Phase	35% Phenyl 65% Methylpolysiloxane
Polarity	Intermediate Polarity
USP Designation	G42
Ideal for	Pesticides, Herbicides, Aromatics, Drugs

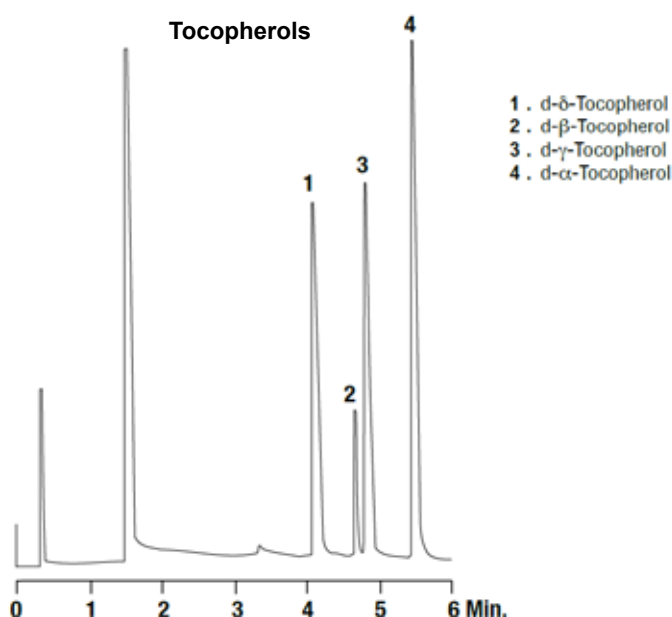
Length Meters	Internal Diameter mm	Film $\mu$	Stock N.
10m	0.25mm	0.25 $\mu$	PA0015
	0.32mm	0.10 $\mu$	PA0023
	0.32mm	0.25 $\mu$	PA0024
	0.53mm	0.20 $\mu$	PA0034
	0.53mm	1.20 $\mu$	PA0035
	0.53mm	2.65 $\mu$	PA0036
15m	0.25mm	0.25 $\mu$	PA0058
	0.25mm	0.50 $\mu$	PA0059
	0.32mm	0.15 $\mu$	PA0091
	0.32mm	0.50 $\mu$	PA0092
	0.53mm	1.20 $\mu$	PA0123
25m	0.25mm	0.20 $\mu$	PA0143
	0.32mm	0.30 $\mu$	PA0149
	0.53mm	1.20 $\mu$	PA0158
30m	0.25mm	0.15 $\mu$	PA0178
	0.25mm	0.20 $\mu$	PA0179
	0.25mm	0.25 $\mu$	PA0180
	0.25mm	0.50 $\mu$	PA0181
	0.25mm	1.00 $\mu$	PA0182
	0.32mm	0.15 $\mu$	PA0221
	0.32mm	0.25 $\mu$	PA0222
	0.32mm	0.50 $\mu$	PA0223
	0.53mm	0.50 $\mu$	PA0260
	0.53mm	1.00 $\mu$	PA0262
0.53mm	1.20 $\mu$	PA0261	
0.53mm	2.65 $\mu$	PA0263	
50m	0.25mm	0.20 $\mu$	PA0284
	0.32mm	0.30 $\mu$	PA0289
60m	0.25mm	0.20 $\mu$	PA0305
	0.25mm	0.25 $\mu$	PA0306
	0.25mm	0.50 $\mu$	PA0307
	0.32mm	0.25 $\mu$	PA0332
	0.32mm	0.50 $\mu$	PA0333
0.53mm	1.00 $\mu$	PA0356	

## SepaFlex - Sepa-35ms

- Intermediate Polarity for General Purpose Applications
- Specifically designed for MS detector
- Similar to DB-35ms, HP-35ms, RTX-35ms, SUP-HERB, AT-35ms

SepaFlex Sepa-35ms Specifications	
Phase	Low Bleeding 35% Phenyl 65% Methylpolysiloxane
Polarity	Intermediate Polarity
USP Designation	G42
Ideal for	Pesticides, Herbicides, Aromatics, Drugs

Length Meters	Internal Diameter mm	Film $\mu$	Stock N.
15m	0.25mm	0.25 $\mu$	PA0060
30m	0.25mm	0.25 $\mu$	PA0183
60m	0.25mm	0.20 $\mu$	PA0308



Column : SepaFlex Sepa-35 - 25m x 0.25mm x 0.20 $\mu$  (Part n. PA0143)  
 Detector : FID  
 Oven Temp : 310°C  
 Carrier Gas : Hydrogen 40cm/sec

## SepaFlex - Sepa-502.2

- Separates Early Eluting Gases at Above Ambient Temp
- Ideal for Organic Volatiles listed in EPA 502.2, 524.2 and 8260 Methods

SepaFlex Sepa-502.2 Specifications	
Phase	N/A
Polarity	Intermediate Polarity
USP Designation	N/A
Ideal for	Organic Volatiles & EPA 502.2, 524.2 e 8260 Methods

Length Meters	Internal Diameter mm	Film $\mu$	Stock N.
30m	0.25mm	1.40 $\mu$	PA0189
	0.32mm	1.80 $\mu$	PA0229
	0.53mm	3.00 $\mu$	PA0272
60m	0.53mm	3.00 $\mu$	PA0363



Didn't find the size you are looking for?

Ask at [info@sepachrom.com](mailto:info@sepachrom.com)

We make your column with custom size!

## SepaFlex - Sepa-1701

- Similar to DB-1701, CP-Sil 19 CB, RTX-1701, AT-1701, SPB-1701, Equity-1701, 007-1701, ZB-1701

SepaFlex Sepa-1701 Specifications	
Phase	14% Cyanopropylphenyl 86% Methylpolysiloxane
Polarity	Intermediate Polarity
USP Designation	N/A
Ideal for	Pesticides, PCB, Herbicides & Carbohydrates TMS

Length Meters	Internal Diameter mm	Film $\mu$	Stock N.
10m	0.10mm	0.10 $\mu$	PA0008
	0.25mm	0.20 $\mu$	PA0013
15m	0.25mm	0.20 $\mu$	PA0048
	0.25mm	0.25 $\mu$	PA0049
	0.25mm	1.00 $\mu$	PA0050
	0.32mm	0.15 $\mu$	PA0081
	0.32mm	0.25 $\mu$	PA0083
	0.32mm	1.00 $\mu$	PA0085
	0.53mm	1.00 $\mu$	PA0118
	0.53mm	1.20 $\mu$	PA0116
25m	0.25mm	0.20 $\mu$	PA0141
	0.32mm	0.30 $\mu$	PA0148
	0.53mm	1.20 $\mu$	PA0154
30m	0.25mm	0.15 $\mu$	PA0167
	0.25mm	0.25 $\mu$	PA0169
	0.25mm	1.00 $\mu$	PA0170
	0.32mm	0.25 $\mu$	PA0210
	0.32mm	1.00 $\mu$	PA0212
	0.53mm	0.50 $\mu$	PA0250
	0.53mm	1.00 $\mu$	PA0254
60m	0.53mm	0.50 $\mu$	PA0351
	0.53mm	1.00 $\mu$	PA0352

## SepaFlex - Sepa-225

- Similar to DB-225, HP-225, RTX-225, CP Sil 43 CB, 007-225

SepaFlex Sepa-225 Specifications	
Phase	50% Cyanopropylphenyl 50% Methylpolysiloxane
Polarity	Medium-High Polarity
USP Designation	G19
Ideal for	Carbohydrates and Solvents


Length Meters	Internal Diameter mm	Film $\mu$	Stock N.
15m	0.25mm	0.20 $\mu$	PA0056
	0.25mm	0.25 $\mu$	PA0057
	0.32mm	0.25 $\mu$	PA0090
25m	0.25mm	0.20 $\mu$	PA0142
	0.53mm	1.20 $\mu$	PA0157
30m	0.25mm	0.25 $\mu$	PA0177
	0.32mm	0.25 $\mu$	PA0219
	0.32mm	0.30 $\mu$	PA0220
	0.53mm	1.20 $\mu$	PA0259

## SepaFlex - Sepa-1000

- Similar to DB-FFAP, HP-FFAP, CP-Wax 58 CB, AT-1000, EC-1000, SPB-1000, Stabilwax DA, ZB-FFAP

SepaFlex Sepa-1000 Specifications	
Phase	100% PEG - Acid Modified
Polarity	High Polarity
USP Designation	G25 - G35
Ideal for	Free Fatty Acids

Length Meters	Internal Diameter mm	Film $\mu$	Stock N.
10m	0.25mm	0.20 $\mu$	PA0012
	0.32mm	0.30 $\mu$	PA0022
	0.53mm	1.20 $\mu$	PA0031
15m	0.25mm	0.20 $\mu$	PA0046
	0.25mm	0.25 $\mu$	PA0047
	0.32mm	0.25 $\mu$	PA0079
	0.32mm	0.30 $\mu$	PA0080
	0.53mm	1.00 $\mu$	PA0114
	0.53mm	1.20 $\mu$	PA0113
25m	0.25mm	0.20 $\mu$	PA0140
	0.32mm	0.30 $\mu$	PA0147
	0.53mm	1.20 $\mu$	PA0153
30m	0.25mm	0.20 $\mu$	PA0165
	0.25mm	0.25 $\mu$	PA0166
	0.32mm	0.25 $\mu$	PA0206
	0.32mm	0.30 $\mu$	PA0207
	0.53mm	1.00 $\mu$	PA0248
	0.53mm	1.20 $\mu$	PA0247
50m	0.25mm	0.20 $\mu$	PA0283
	0.32mm	0.30 $\mu$	PA0288
60m	0.25mm	0.20 $\mu$	PA0299
	0.25mm	0.25 $\mu$	PA0300
	0.32mm	0.25 $\mu$	PA0326
	0.32mm	0.30 $\mu$	PA0327
	0.32mm	1.00 $\mu$	PA0328
	0.53mm	1.00 $\mu$	PA0350



Do you want switch from Gas Cylinders to Generators?

Parker DH Generators are available from us.

Call at **+39 02 365 41 401** to check which generator is best suited to your needs !



## SepaFlex - Sepa-WAX

- Polar Phase
- Similar to DB-WAX, DB-WAXetr, HP-20M, HP-INNOWax, CP-Wax 52 CB, RTX-WAX, Stabilwax, Supelcowax-10, AT-Wax, EC-Wax, SolGel-Wax, 007-CW, ZB-Wax

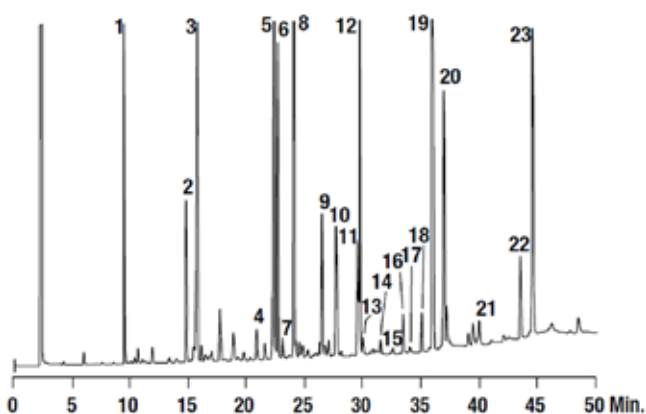
SepaFlex Sepa-WAX Specifications	
Phase	100% Polyethylenglycol
Polarity	Polar
USP Designation	G14 - G15 - G16 - G39
Ideal for	FAME, Polar Solvents, BTEX, Glycols, Alchols, Aromatics

Length Meters	Internal Diameter mm	Film $\mu$	Stock N.
10m	0.18mm	0.20 $\mu$	PA0007
	0.25mm	0.20 $\mu$	PA0017
	0.25mm	0.25 $\mu$	PA0018
	0.32mm	0.25 $\mu$	PA0026
	0.53mm	1.20 $\mu$	PA0041
15m	0.25mm	0.15 $\mu$	PA0067
	0.25mm	0.20 $\mu$	PA0068
	0.25mm	0.25 $\mu$	PA0069
	0.25mm	0.50 $\mu$	PA0070
	0.25mm	1.00 $\mu$	PA0071
	0.32mm	0.25 $\mu$	PA0098
	0.32mm	0.30 $\mu$	PA0099
	0.32mm	0.50 $\mu$	PA0100
	0.32mm	1.00 $\mu$	PA0101
	0.32mm	2.50 $\mu$	PA0102
	0.53mm	0.50 $\mu$	PA0132
	0.53mm	1.00 $\mu$	PA0135
	0.53mm	1.20 $\mu$	PA0133
0.53mm	1.50 $\mu$	PA0134	
0.53mm	2.50 $\mu$	PA0136	
0.53mm	5.00 $\mu$	PA0137	
25m	0.25mm	0.20 $\mu$	PA0145
	0.32mm	0.30 $\mu$	PA0151
	0.53mm	1.20 $\mu$	PA0160
30m	0.25mm	0.15 $\mu$	PA0195
	0.25mm	0.20 $\mu$	PA0196
	0.25mm	0.25 $\mu$	PA0197
	0.25mm	0.50 $\mu$	PA0198
	0.32mm	0.25 $\mu$	PA0235
	0.32mm	0.30 $\mu$	PA0236
	0.32mm	0.50 $\mu$	PA0237
	0.32mm	1.00 $\mu$	PA0238
	0.53mm	0.50 $\mu$	PA0274
	0.53mm	1.00 $\mu$	PA0277
	0.53mm	1.20 $\mu$	PA0275
0.53mm	1.50 $\mu$	PA0276	
0.53mm	2.00 $\mu$	PA0279	
0.53mm	2.50 $\mu$	PA0278	
0.53mm	5.00 $\mu$	PA0280	
50m	0.25mm	0.20 $\mu$	PA0286
	0.32mm	0.30 $\mu$	PA0291
	0.53mm	1.20 $\mu$	PA0295

Length Meters	Internal Diameter mm	Film $\mu$	Stock N.
60m	0.25mm	0.20 $\mu$	PA0317
	0.25mm	0.25 $\mu$	PA0318
	0.25mm	0.50 $\mu$	PA0319
	0.32mm	0.25 $\mu$	PA0340
	0.32mm	0.30 $\mu$	PA0341
	0.32mm	0.50 $\mu$	PA0342
	0.53mm	0.50 $\mu$	PA0365
	0.53mm	1.00 $\mu$	PA0368
	0.53mm	1.20 $\mu$	PA0366
	0.53mm	1.50 $\mu$	PA0367

### Poly Insaturated Fatty Acids

- |                     |                       |                       |
|---------------------|-----------------------|-----------------------|
| 1. C14:0            | 9. C18:3 $\omega$ 3   | 17. C20:3 $\omega$ 3  |
| 2. C16:0            | 10. C18:4 $\omega$ 3  | 18. C20:4 $\omega$ 3  |
| 3. C16:1 $\omega$ 7 | 11. C20:1 $\omega$ 11 | 19. C22:1 $\omega$ 11 |
| 4. C16:4 $\omega$ 1 | 12. C20:1 $\omega$ 9  | 20. C22:1 $\omega$ 9  |
| 5. C18:1 $\omega$ 9 | 13. C20:1 $\omega$ 7  | 21. C21:5 $\omega$ 3  |
| 6. C18:1 $\omega$ 7 | 14. C20:2 $\omega$ 6  | 22. C22:5 $\omega$ 3  |
| 7. C18:1 $\omega$ 5 | 15. C20:3 $\omega$ 6  | 23. C22:6 $\omega$ 3  |
| 8. C18:2 $\omega$ 6 | 16. C20:4 $\omega$ 6  |                       |



**Column** : SepaFlex Sepa-WAX - 30m x 0.25mm x 0.25 $\mu$  (Part n. PA0197)  
**Detector** : FID  
**Oven Temp** : 160°C to 250°C, 2°C/min  
**Carrier Gas** : Helium 0.65mL/min

## SepaFlex - Sepa-WAXms

- Specifically designed for MS detector - Low Bleeding
- Similar to DB-WAX, HP-INNOWax, CP-Wax 52 CB, RTX-WAX, Stabilwax, Supelcowax-10, SolGel-Wax, ZB-Wax-Plus

SepaFlex Sepa-WAXms Specifications	
Phase	Low Bleeding 100% Polyethylenglycol
Polarity	Polar
USP Designation	G14 - G15 - G16 - G39
Ideal for	Analysis with MS Detector

Length Meters	Internal Diameter mm	Film $\mu$	Stock N.
15m	0.25mm	0.25 $\mu$	PA0072
	0.32mm	0.25 $\mu$	PA0103
	0.53mm	1.00 $\mu$	PA0138
30m	0.25mm	0.25 $\mu$	PA0199
	0.32mm	0.25 $\mu$	PA0239
	0.53mm	1.00 $\mu$	PA0281
60m	0.25mm	0.25 $\mu$	PA0320
	0.32mm	0.25 $\mu$	PA0343

# EcoSep - High Performance Capillary Columns

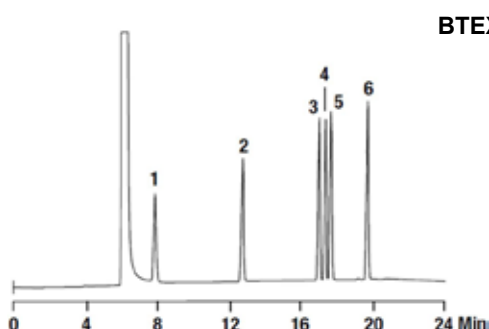
## EcoSep Capillary Columns: the best quality/price ratio on the market

The Capillary Columns **EcoSep** are the best choice of Quality/Price ratio available today in the market. They include the most commonly used stationary phases and are QC tested on production batch. The saving on the QC test is forwarded to the customer. This does not affect the High Quality and their performance is always guaranteed.

They are ideal for limited budget availability, to whom want save money without sacrificing the quality or for tough applications where the column destroy prematurely. Still valid the formula "Satisfied or Refunded".

EcoSep - Capillary Column Specifications					
	EcoSep-1	EcoSep-5	EcoSep-20	EcoSep-WAX	EcoSep-1000
<b>Phase</b>	100% Dimethylpolysiloxane	5% Phenyl 95% Methylpolysiloxane	20% Phenyl 80% Methylpolysiloxane	Polyethyleneglycol	Polyethyleneglycol Acid Modified
<b>Polarity</b>	Non Polar	Non Polar	Intermediate Polarity	Polar	High Polarity
<b>USP Designation</b>	G1 - G2 - G38	G27 - G36	G28 - G32	G14 - G15 - G16 - G39	G25 - G35
<b>Ideal for</b>	General Purpose Application	General Purpose Application	Volatile Compounds and Solvents	FAME, Polar Solvents, BTEX, Glycols, Alcohols, Aromatics	Free Fatty Acids

Length Meters	Internal Diameter mm	Film $\mu$	Stock N. EcoSep Capillary Columns				
			EcoSep-1	EcoSep-5	EcoSep-20	EcoSep-WAX	EcoSep-1000
15m	0.53mm	1.00 $\mu$	PB0002	PB0008	PB0006	PB0010	PB0004
	0.53mm	1.20 $\mu$	PB0001	PB0007	PB0005	PB0009	PB0003
30m	0.25mm	0.25 $\mu$	PB0011	PB0014	PB0013	PB0015	PB0012
	0.32mm	0.25 $\mu$	PB0016	PB0020	PB0019	PB0022	PB0018
	0.32mm	1.00 $\mu$	PB0017	PB0021			
	0.53mm	1.00 $\mu$	PB0024	PB0030	PB0028	PB0032	PB0026
	0.53mm	1.20 $\mu$	PB0023	PB0029	PB0027	PB0031	PB0025



**BTEX**

1. Benzene
2. Toluene
3. Ethylbenzene
4. *p*-Xylene
5. *m*-Xylene
6. *o*-Xylene

**Column** : EcoSep-WAX - 30m x 0.53mm x 1.20 $\mu$  (Part n. PB0031)

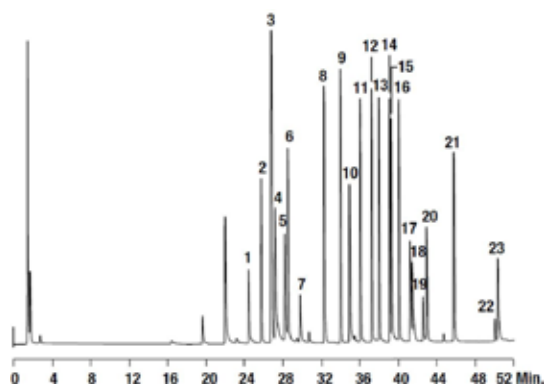
**Detector** : FID - 275 $^{\circ}$ C  
**Oven Temp** : 40 $^{\circ}$ C (8 min hold) to 100 $^{\circ}$ C, 4 $^{\circ}$ C/min  
**Carrier Gas** : Helium 2.5mL/min

**Batch Tested**



**20% Saving**

## EPA Method 508 - Chlorinated Pesticides in Water



- |                         |                              |
|-------------------------|------------------------------|
| 1. Propachlor           | 13. $\alpha$ -Chlordane      |
| 2. Trifluralin          | 14. Dieldrin                 |
| 3. $\alpha$ -HCH        | 15. <i>p,p'</i> -DDE         |
| 4. Hexachlorobenzene    | 16. Endrin                   |
| 5. $\beta$ -HCH         | 17. <i>p,p'</i> -DDD         |
| 6. $\gamma$ -HCH        | 18. Endrin Aldehyde          |
| 7. $\delta$ -HCH        | 19. Endosulfan Sulfate       |
| 8. Heptachlor           | 20. <i>p,p'</i> -DDT         |
| 9. Aldrin               | 21. Methoxychlor             |
| 10. DCPA                | 22. <i>cis</i> -Permethrin   |
| 11. Heptachlor Epoxide  | 23. <i>trans</i> -Permethrin |
| 12. $\gamma$ -Chlordane |                              |

**Column** : EcoSep-5 - 30m x 0.32mm x 0.25 $\mu$  (Part n. PB0020)

**Detector** : ECD  
**Oven Temp** : 60 $^{\circ}$ C to 300 $^{\circ}$ C, 4 $^{\circ}$ C/min  
**Carrier Gas** : Helium 1.45mL/min

# SepaFlex - High Performance Capillary Columns

## Other Capillary Columns SepaFlex available :

The Capillary Column product line **SepaFlex** include the following types and stationary phases here listed in order to perform, in the most appropriate way, all applications that GC Users approach on daily base.

These Capillary Columns are available with all the standard dimensions. However we can manufacture customized size in order to match any particular or specific need. Contact us for any further information about price and availability.

**UltraMet-HT** : For very High Temperature application we offer our line UltraMet-HT. These Capillary Columns in inert metal are available with almost all the **SepaFlex** Stationary Phases.

**ChiraFlex** : Our Capillary Columns for Chiral Separations based on **Cyclodextrins** phases.

**SpeedyFlex** : All the **SepaFlex** Stationary Phases are available in FastGC Capillary Columns from 0.05mmID to 0.15mmID in all standard and custom length.

## Other Capillary Columns available at SepaChrom:

SepaChrom is also distributor of other capillary column brands well known and used since decades by the GC Users. Ask a quotation for the Capillary Columns used in your validated method. You will be pleased by our price and delivery time.



### Heliflex®

Stationary Phase	Stationary Phase
AT™-1	AT™-WAX
AT™-1ms	AT™-WAXms
AT™-1ht	AT™-AquaWax
AT™-5	AT™-AquaWaxDA
AT™-5ms	AT™-1000
AT™-20	AT™-FAME
AT™-35	AT™-CAM
AT™-35ms	AT™-Pesticide
AT™-50	AT™-502.2
AT™-624	AT™-Petro
AT™-1301	AT™-2887
AT™-1701	AT™-3710
AT™-210	AT™-Sulfur
AT™-225	AT™-Amine

The **Alltech** Capillary Columns, formerly part of **W.R.Grace & Co** group, have been since ever a reference by the Users of Gaschromatography techniques.

Their undisputed quality is recognized by anyone who has used them.

**SepaChrom** offer the Capillary Column brands **Heliflex®** and **Econo-Cap™**.

Competitive price and fast delivery time are our strengths.

Contact us for a quotation!

### Econo-Cap™

Stationary Phase	Stationary Phase
EC™-1	EC™-1000
EC™-5	EC™-WAX
EC™-20	



## Other Products available at SepaChrom:



HeadSpace and Sampling Vials.  
Vials for all existing Autosamplers.  
Delivery from stock and competitive price.  
Ask a quotation and compare!




Hamilton Syringes for Gaschromatography, HPLC and sampling.  
Liners and Septa for all brands of Gaschromatography Instrumentation.



Tubing for Gaschromatography in Stainless Steel AISI304, AISI316, Nickel, Copper, Aluminium and Polymeric  
Fittings, Ferrule, Tee and Valve to build all the connection needed in your GC line.


# SepaFlex - High Performance Capillary Columns

## Other Products available from SepaChrom




**HPLC**

HPLC, UHPLC & IC Analytical Columns  
Vydac® Columns for Proteins and Peptides  
Guards Columns




**MEDIA**

DAVISIL® - Silica Gel for Flash, Prep and Industrial Purification  
Bonded Silica C18, Cyano, Diol, Amino  
Porosity 30Å- 2500Å



**PREP**

Prep Columns 10-200mmID  
Preparative and Process Systems  
Scale-up Method Development  
Packing Service



**FLASH**

PuriFlash™ Cartridges and Instruments for FLASH Chromatography  
TLC Plates and Accessories for Flash



**SPE**

SPE Columns  
SPE Columns for Ion Chromatography  
Syringe Filters  
SPE Accessories



**VIALS**

Vials for HPLC  
Vials for Sampling Application  
Head Space Vials  
Crimper & Decapper  
Sampling Accessories



**GC**

Capillary Columns SepaChrom :  
SepaFlex & Econo-Sep  
  
Capillary Column Heliflex®  
and Econo-Cap™



**Accessories HPLC-GC**

Tubing, Fittings and Ferrules  
Syringes and Septa  
Filters and Frits  
Valves and Accessories for Mobile Phase  
Carrier Gas Traps

## Company Profile

### About us :

**SepaChrom** is a new company specialized in **Chromatography**. **SepaChrom** is the brainchild of the founders to create a dedicated reality, unique and able to support the **Chromatography Users** optimizing their challenges.

Our Core competence is the manufacturing and trading of **High-Quality** products for **GC** and **HPLC Analytical** scale, **Preparative** and **Flash**, including consumables and accessories, till **Process** scale purification.

### Our Mission :

Decades of experience of our team, combined with a range of High Quality selected products and the most efficient technological solutions, allows **SepaChrom** to be a reference to Pharma, Biotech, Chemical, Food and Beverage, Cosmetic, Environmental, Clinical and Petrochemical industries, at R&D department as well at QC laboratories and Production. Our commitment is to provide the Highest Technical Support that Chromatographers expect from **Your Specialist in Chromatography**

### Customers in Mind :

The success of **SepaChrom** depends by the complete **satisfaction** of our customers, and consequently by their success.

**SepaChrom** expertise result in a High-Quality support **pre & after** sales to the Chromatographic Users. This include a **fast delivery** of your products from our warehouse to everywhere.

**SepaChrom**

Your Specialists in Chromatography

**Sepachrom Srl**

Via Trento 33  
20017 RHO MI - Italy

T.: +39 02 365 41 401

F.: +39 02 365 48 378

E.: [info@sepachrom.com](mailto:info@sepachrom.com)

W.: [www.sepachrom.com](http://www.sepachrom.com)